



Orange City, Iowa

Laborshed Analysis

**A Study of Workforce
Characteristics**

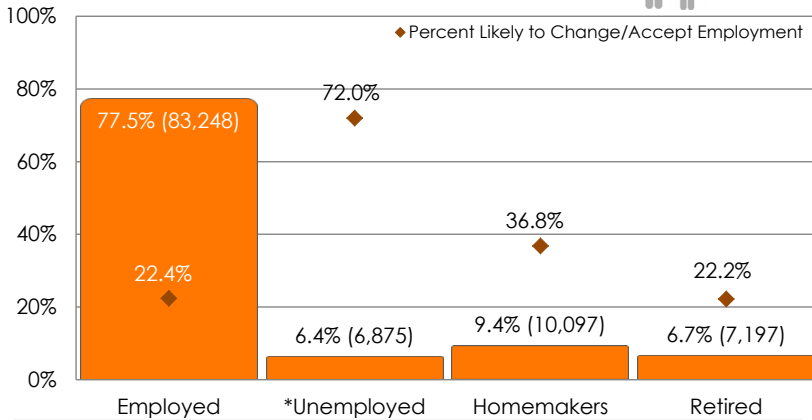


Released November 2017

ORANGE CITY LABORSHED ANALYSIS

A Laborshed is the area or region from which an employment center draws its commuting workers. To determine the approximate boundaries of a Laborshed area, local employers supply the residential ZIP codes of each of their employees. This Laborshed analysis addresses the workforce characteristics of the Orange City Laborshed area.

EMPLOYMENT STATUS (ESTIMATED TOTAL)*



*Employment status is self-identified by the survey respondent. The unemployment percentage above does not reflect the unemployment rate published by the U.S. Bureau of Labor Statistics, which applies a stricter definition.

Estimated Population 18-64: 107,417 (entire Laborshed area)

Estimated Number of Individuals Very Likely or Somewhat Likely to Change or Accept Employment in Orange City/Alton (20,319):

- 18,419 Employed
- 324 Unemployed
- 687 Homemakers
- 889 Retired

EMPLOYED - LIKELY TO CHANGE EMPLOYMENT

- Median wages: \$15.38/hr & \$56,000/yr
- 23.5% are actively seeking new employment
- 31.9% are working multiple jobs
- Currently working an average of 43 hrs/week
- 42.6% currently working within the professional, paraprofessional & technical occupational category followed by 16.4% within the production, construction & material handling occupational category
- Most frequently identified job search resources:

www.indeed.com
www.linkedin.com

Internet,
62.9%

Ad-Visor - Orange City
Sioux Center News
Sioux City Journal

Newspapers,
43.5%

Networking,
22.6%



UNDEREMPLOYMENT



	Underemployment	
	% Underemployed	Estimated Underemployed
Inadequate Hours	1.5%	276
Mismatch of Skills	3.0%	553
Low Income	0.0%	0
†Total Underemployment	4.0%	737

† Individuals may be underemployed for more than one reason, but are counted only once for total estimated underemployment.

The underemployed are individuals who are working fewer than 35 hours per week but desire more hours; are working in positions that do not meet their skill or education level, or have worked for higher wages at previous employment; or are working at wages equal to or less than the national poverty level and work 35 or more hours per week.

EMPLOYMENT LEVELS AND STATUS BY INDUSTRY



Industry	Industry % of Employed	Estimated # of Employed	% Employed within the Industry	% Likely to Change Employment	% Unemployed* within the Industry
Healthcare & Social Services	21.1%	17,565	82.3%	26.2%	5.1%
Education	14.9%	12,404	70.8%	26.7%	1.5%
Wholesale & Retail Trade	13.3%	11,072	68.3%	30.8%	16.7%
Manufacturing	11.0%	9,157	72.3%	23.5%	14.9%
Professional Services	9.4%	7,825	80.6%	21.4%	5.6%
Transportation, Communication & Utilities	7.1%	5,911	91.7%	19.0%	0.0%
Finance, Insurance & Real Estate	6.8%	5,661	80.8%	0.0%	0.0%
Agriculture, Forestry & Mining	5.2%	4,329	94.1%	18.8%	0.0%
Personal Services	4.9%	4,079	75.0%	20.0%	0.0%
Public Administration & Government	3.3%	2,747	90.9%	10.0%	0.0%
Construction	2.7%	2,248	88.9%	12.5%	11.1%
Entertainment & Recreation	0.3%	250	**	**	**

** Insufficient survey data/refused

Survey respondents from the Orange City Laborshed area were asked to identify the industry in which they are currently working. The largest concentration of workers are employed in the healthcare & social services industry.

COMMUTING STATISTICS



The map at the right represents the concentration of those who are likely to commute into Orange City/Alton from their home ZIP for an employment opportunity.

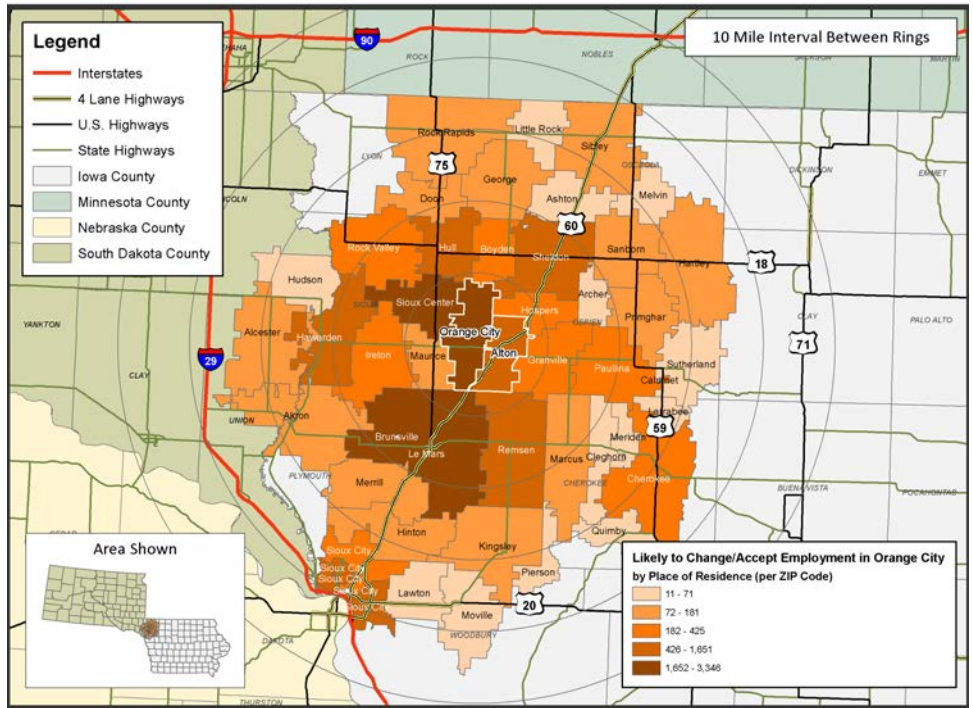
Those who are likely to change/accept employment in the Orange City Laborshed area are willing to commute an average of 21 miles one-way for employment opportunities.

The out commute for Orange City/Alton is estimated at 21.6 percent—approximately 910 people living in Orange City/Alton work in other communities.

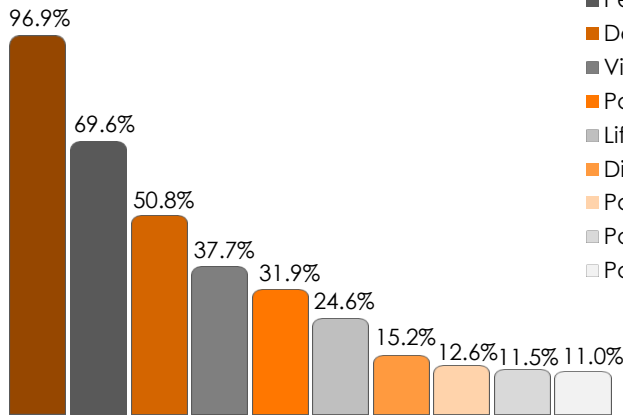
Most of those who are out commuting are working in Sioux Center.

One-fourth (25.0%) of out commuters are likely to change employment (approximately 228 people).

CONCENTRATION OF THOSE LIKELY TO CHANGE/ACCEPT EMPLOYMENT IN ORANGE CITY/ALTON



TOP CURRENT BENEFITS OF THE FULL-TIME EMPLOYED



- Health/Medical Insurance
- Pension/Retirement/401K
- Dental Coverage
- Vision Coverage
- Paid Vacation
- Life Insurance
- Disability Insurance
- Paid Time Off
- Paid Holidays
- Paid Sick Leave

The survey provides the respondents an opportunity to identify employment benefits they currently are offered. The chart at left provides the percentage of responses from those that are currently employed full-time.

The majority (77.9%) of these respondents state they are currently sharing the cost of health/medical insurance premiums with their employer. However, 14.2 percent indicate their employer pays the entire cost of insurance premiums.

EDUCATION LEVELS AND MEDIAN WAGES BY INDUSTRY

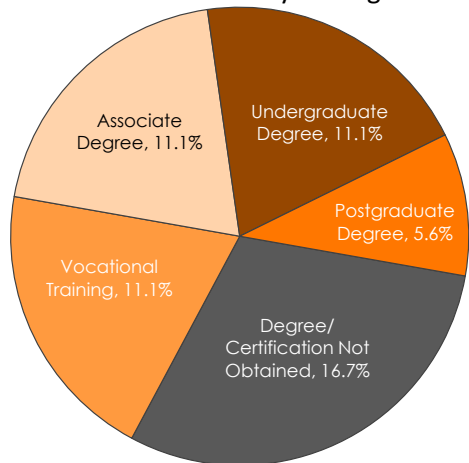


	Education			Median Wages	
	Some Level Beyond High School	Associate Degree	Undergraduate Degree or Higher	Annual Salary	Hourly Wage
All Employed	80.6%	16.9%	37.6%	\$60,000	\$16.75
Agriculture, Forestry & Mining	64.7%	29.4%	23.5%	**	**
Construction	55.6%	22.2%	33.3%	**	\$24.75
Education	92.2%	9.4%	70.3%	\$58,000	\$12.50
Entertainment & Recreation	**	**	**	**	**
Finance, Insurance & Real Estate	88.5%	23.1%	34.6%	\$93,000	\$15.50
Healthcare & Social Services	86.1%	15.2%	45.6%	\$75,000	\$16.00
Manufacturing	70.2%	10.6%	23.4%	\$65,000	\$16.51
Personal Services	90.0%	15.0%	35.0%	\$47,000	**
Professional Services	86.1%	27.8%	30.5%	\$55,000	\$19.78
Public Administration & Government	81.8%	27.3%	18.2%	**	\$19.50
Transportation, Communication & Utilities	45.8%	8.3%	16.6%	\$56,000	\$24.00
Wholesale & Retail Trade	66.7%	16.7%	16.7%	\$75,000	\$11.73

The education and wage data by industry within the above table includes all respondents without consideration of employment status or willingness to change/enter employment.
 **Insufficient survey data/refused

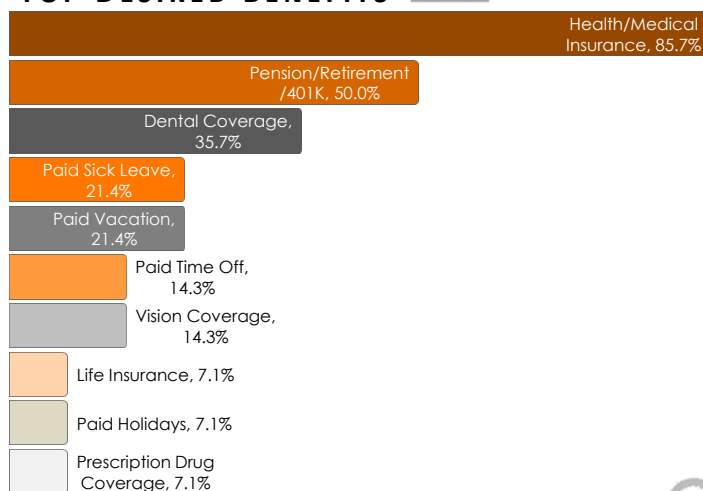
UNEMPLOYED - LIKELY TO ACCEPT EMPLOYMENT

- 64.7% are actively seeking employment
- An estimated 324 unemployed individuals are likely to accept employment in Orange City/Alton.
- Average age is 44 years old
- 61.1% are female; 38.9% are male
- **Education:**
 - 55.6% are educated beyond high school

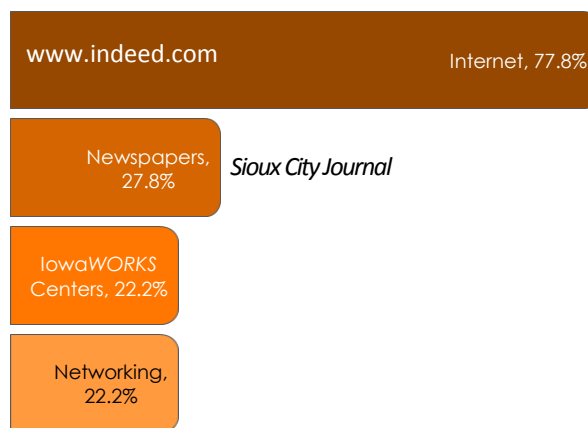


- **Wages:**
 - \$11.23/hr - lowest median wage willing to accept
 - \$12.00/hr - to attract 66 to 75 percent of applicants
- Willing to commute an average of 24 miles one way for the right opportunity
- 82.4% expressed interest in temporary and 53.3% in seasonal employment opportunities
- 47.1% expressed interest in working varied shifts

TOP DESIRED BENEFITS



TOP JOB SEARCH RESOURCES



SPONSORED IN PARTNERSHIP WITH:



FOR MORE INFORMATION REGARDING THE ORANGE CITY LABORSHED ANALYSIS, CONTACT:

City of Orange City
 125 Central Avenue SE
 Orange City, IA 51041
 Phone: 712-707-4885
 Email: econdev@orangecityiowa.com
www.orangecityiowa.com